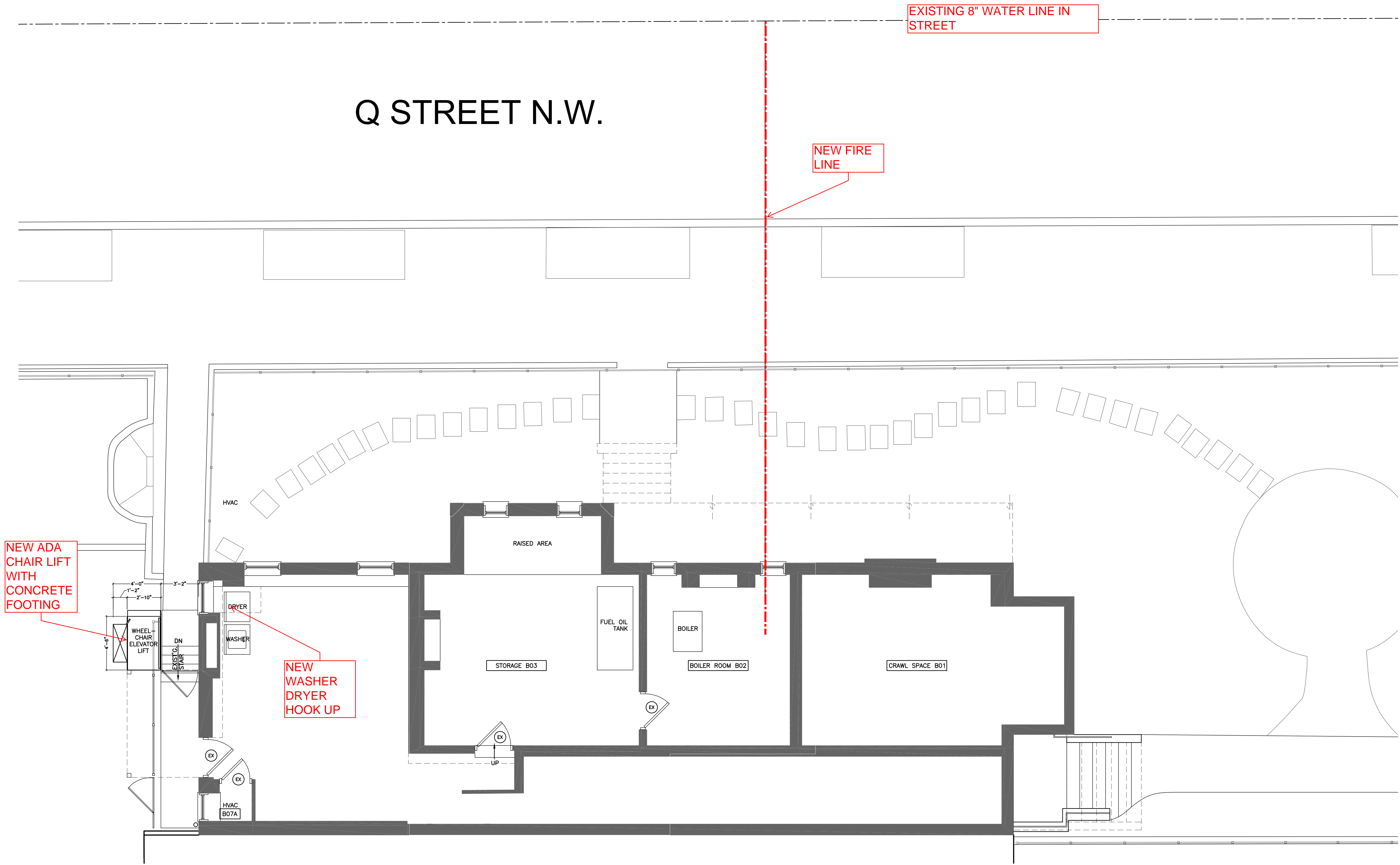


**NOTE: THE ARCHITECTURAL PLANS THAT FOLLOW ARE THE MOST RECENT  
DRAFTS WE HAVE AND WILL CHANGE.**



NEW ADA CHAIR LIFT WITH CONCRETE FOOTING

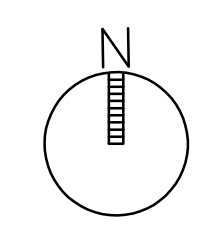
NEW WASHER DRYER HOOK UP

EXISTING 8" WATER LINE IN STREET

NEW FIRE LINE

Q STREET N.W.

01 BASEMENT FLOOR PLAN  
TA101 SCALE: 1/4"=1'-0"



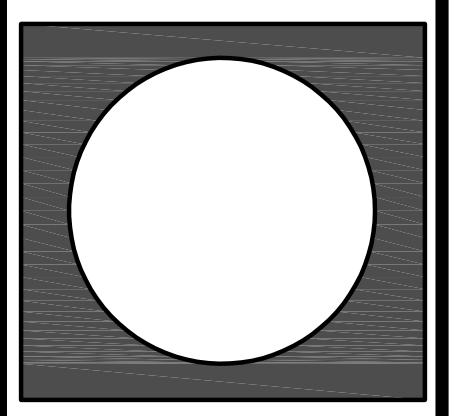
OWNER



CONSULTANT

KEY PLAN

PROFESSIONAL CERTIFICATION



PROGRESS PRINTING

ISSUED FOR	DATE

ISSUED FOR CONSTRUCTION

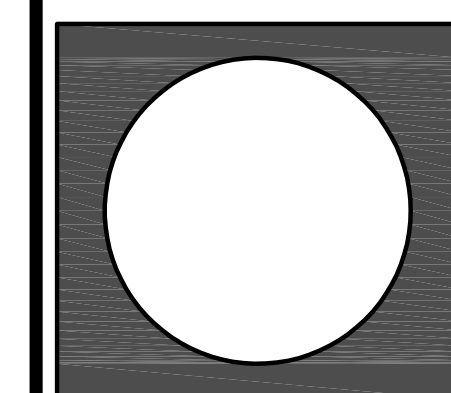
REVISIONS

NO.	REVISION	DATE

1536 16th Street NW Washington, D.C.  
 PETA FOUNDATION  
 BASEMENT FLOOR PLAN

DNC PROJECT NUMBER  
20013

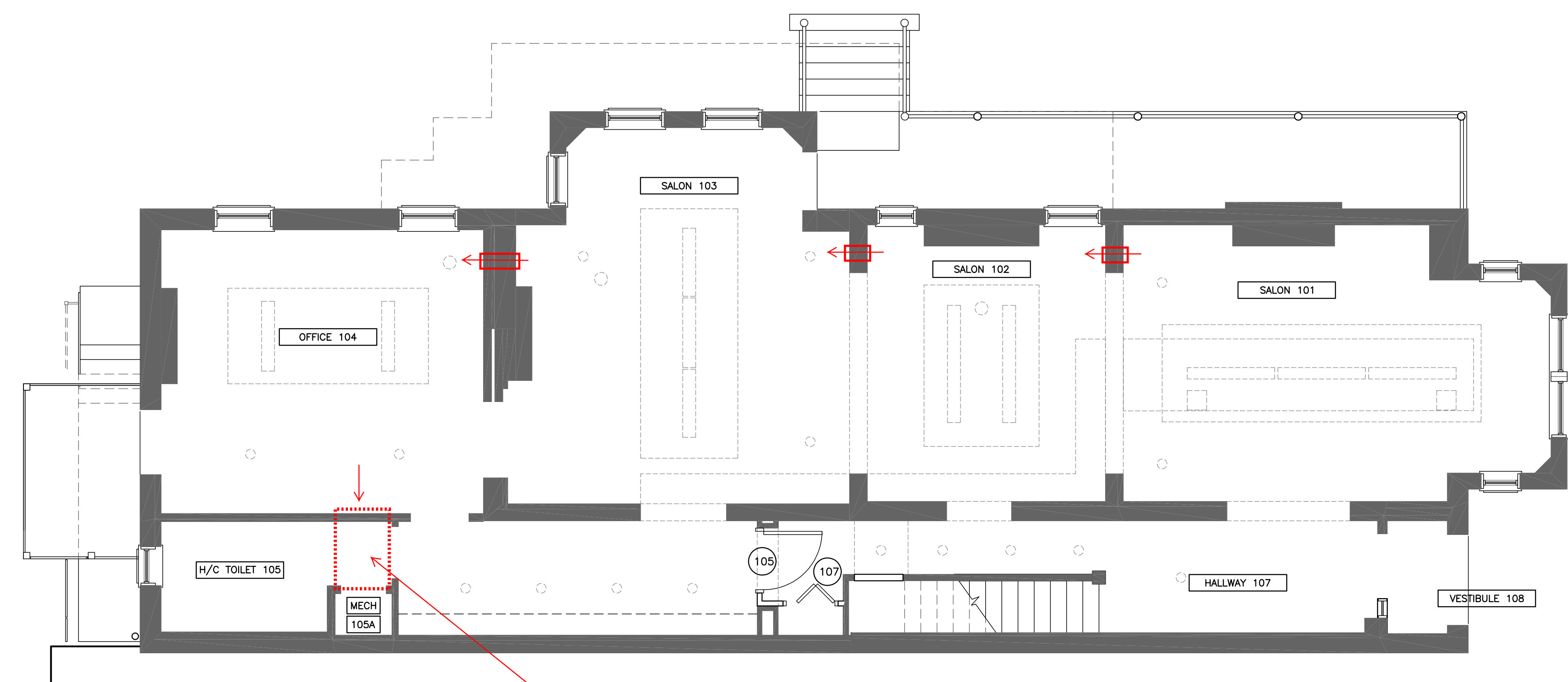
TA101



ISSUED FOR	DATE

NO.	REVISION	DATE

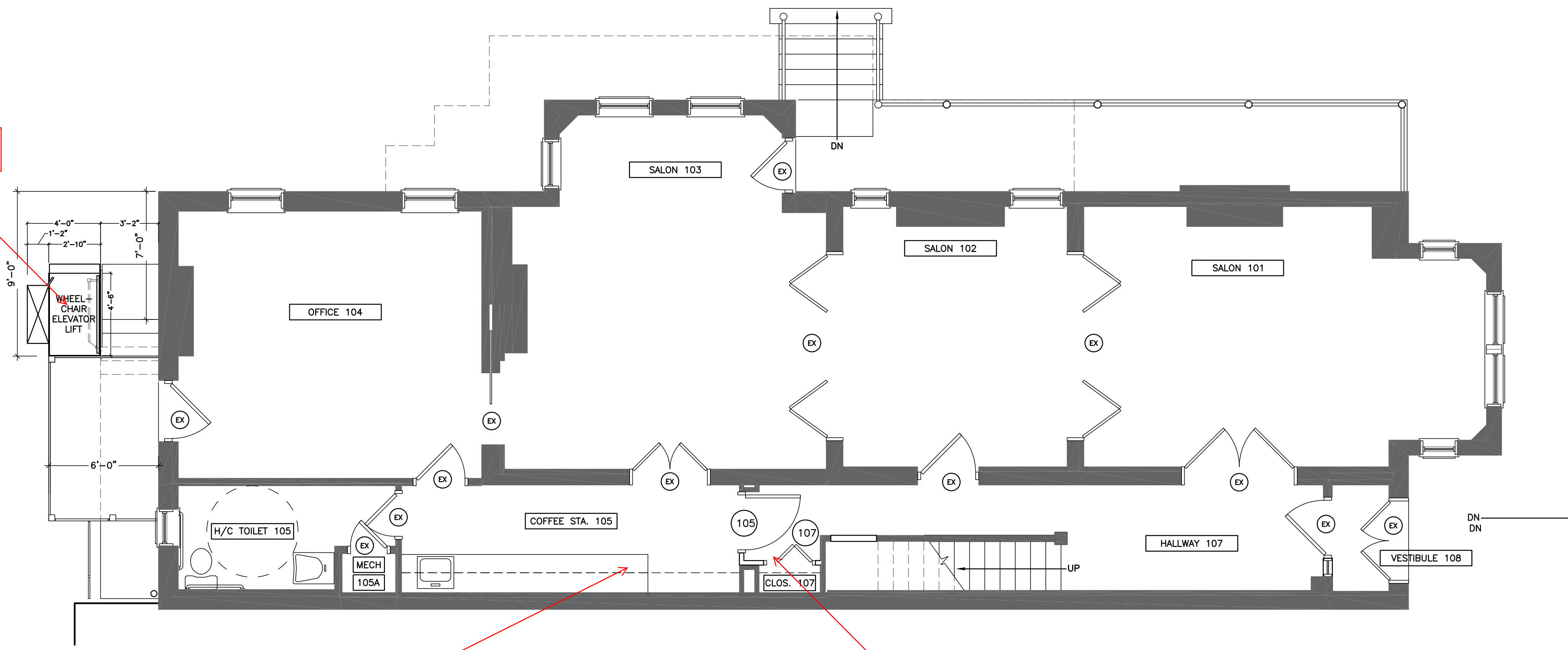
1536 16th Street NW Washington, D.C.  
 PETA FOUNDATION  
 FIRST FLOOR PLAN & RCP



02 FIRST FLOOR RCP  
 TA102 SCALE: 1/4"=1'-0"

RETURN AIR  
1 HR ENCLOSURE

← [Symbol] TRANSFER DUCT

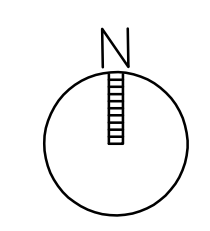


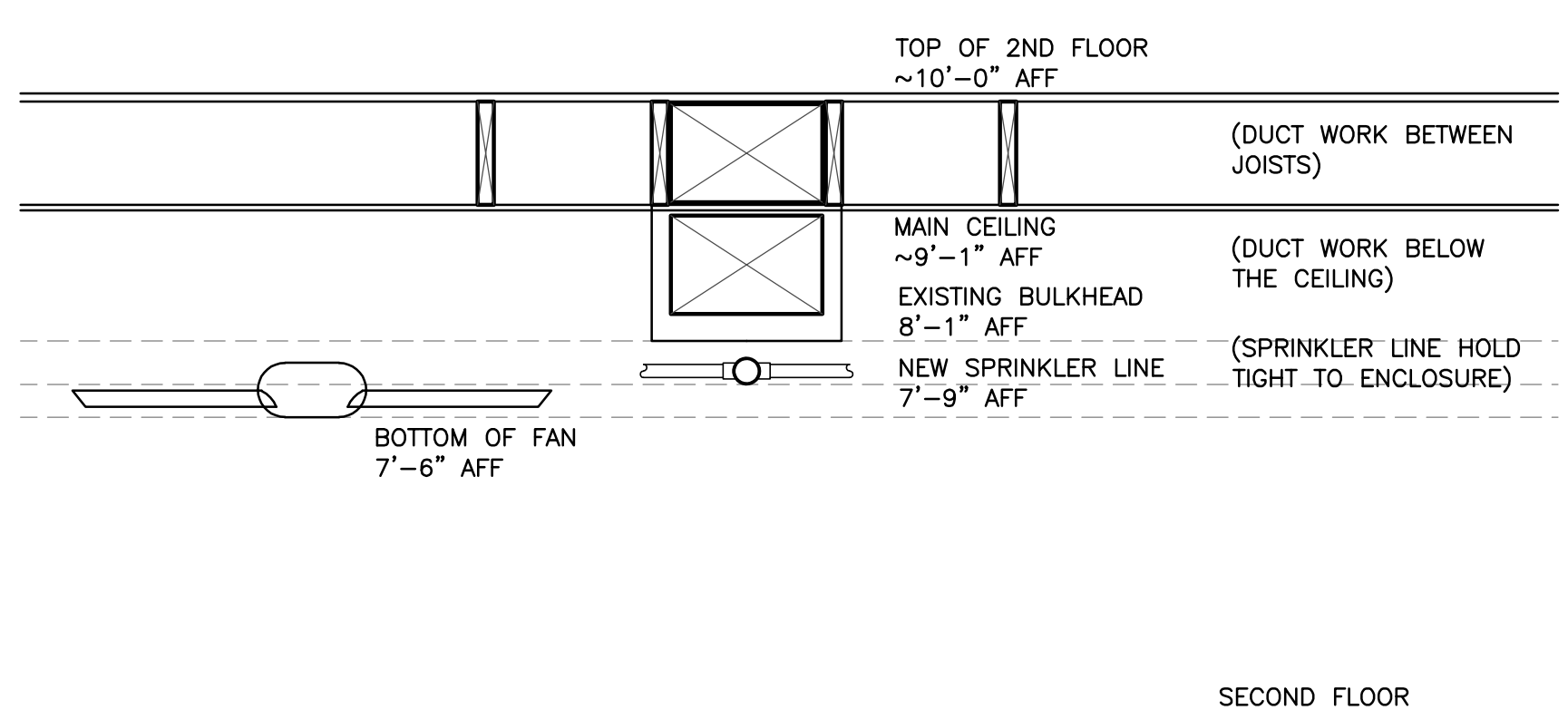
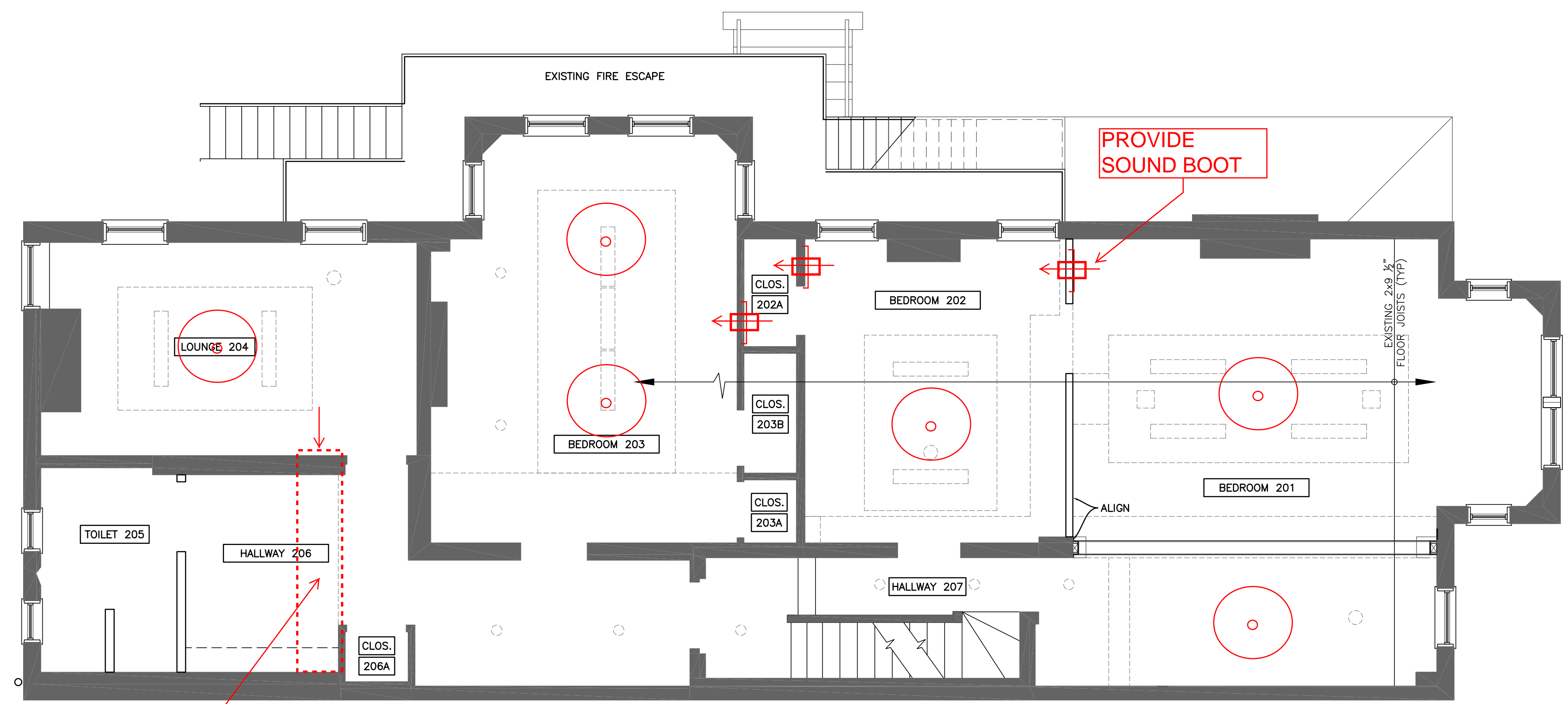
01 FIRST FLOOR PLAN  
 TA102 SCALE: 1/4"=1'-0"

NEW ADA  
CHAIR LIFT

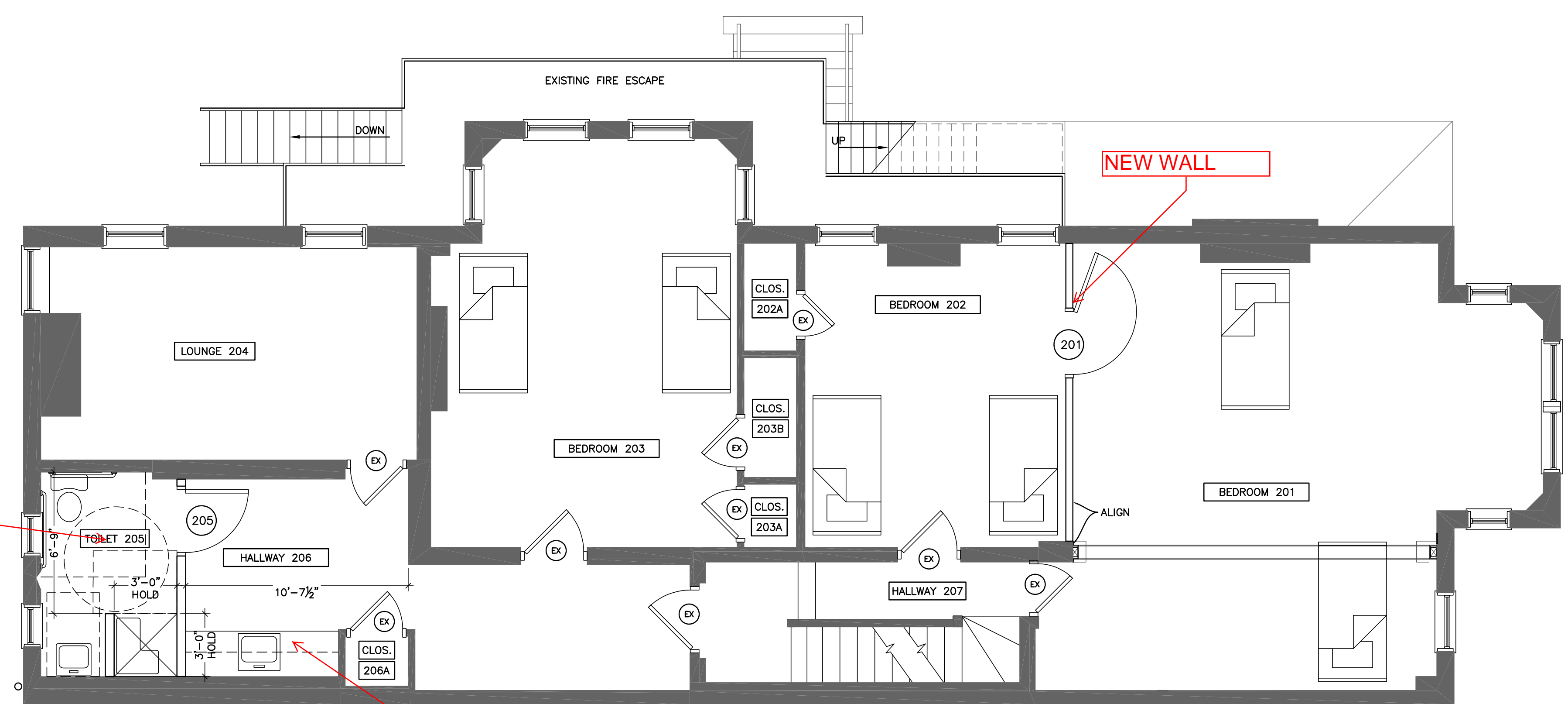
NEW  
MILLWORK

NEW RATED DOOR.  
NEW CLOSET

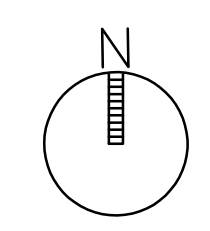




02 SECOND FLOOR RCP  
TA103 SCALE: 1/4"=1'-0"



01 SECOND FLOOR PLAN  
TA103 SCALE: 1/4"=1'-0"



DNCtitle.dwg 4-26-06 3:32:02 pm EST

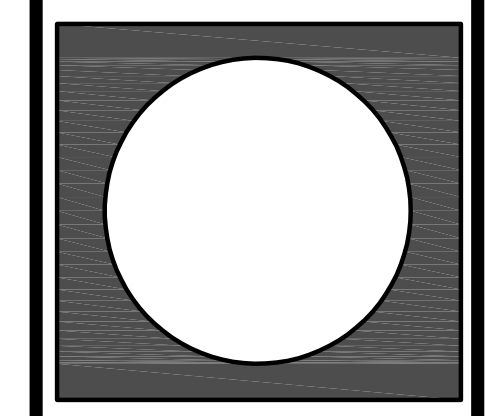
OWNER



CONSULTANT

KEY PLAN

PROFESSIONAL CERTIFICATION



PROGRESS PRINTING

ISSUED FOR	DATE

ISSUED FOR CONSTRUCTION

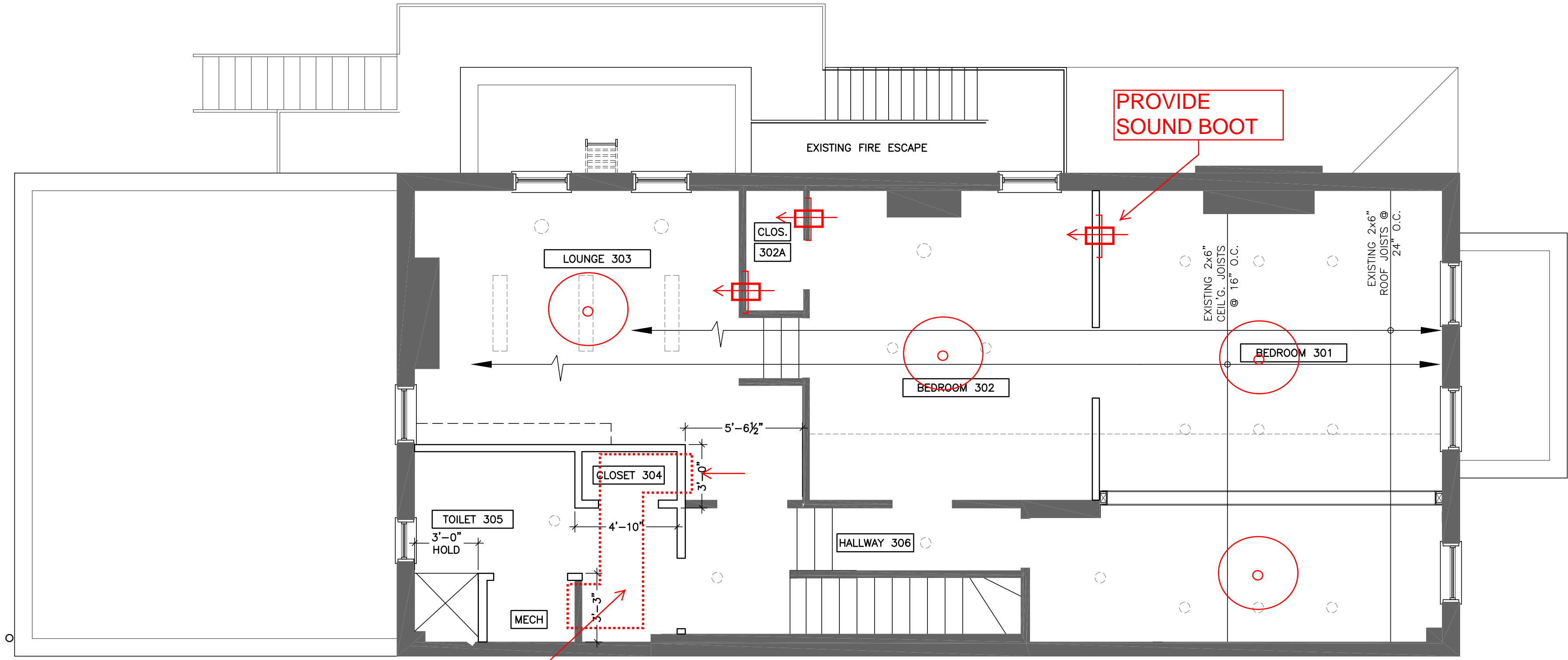
REVISIONS

NO.	REVISION	DATE

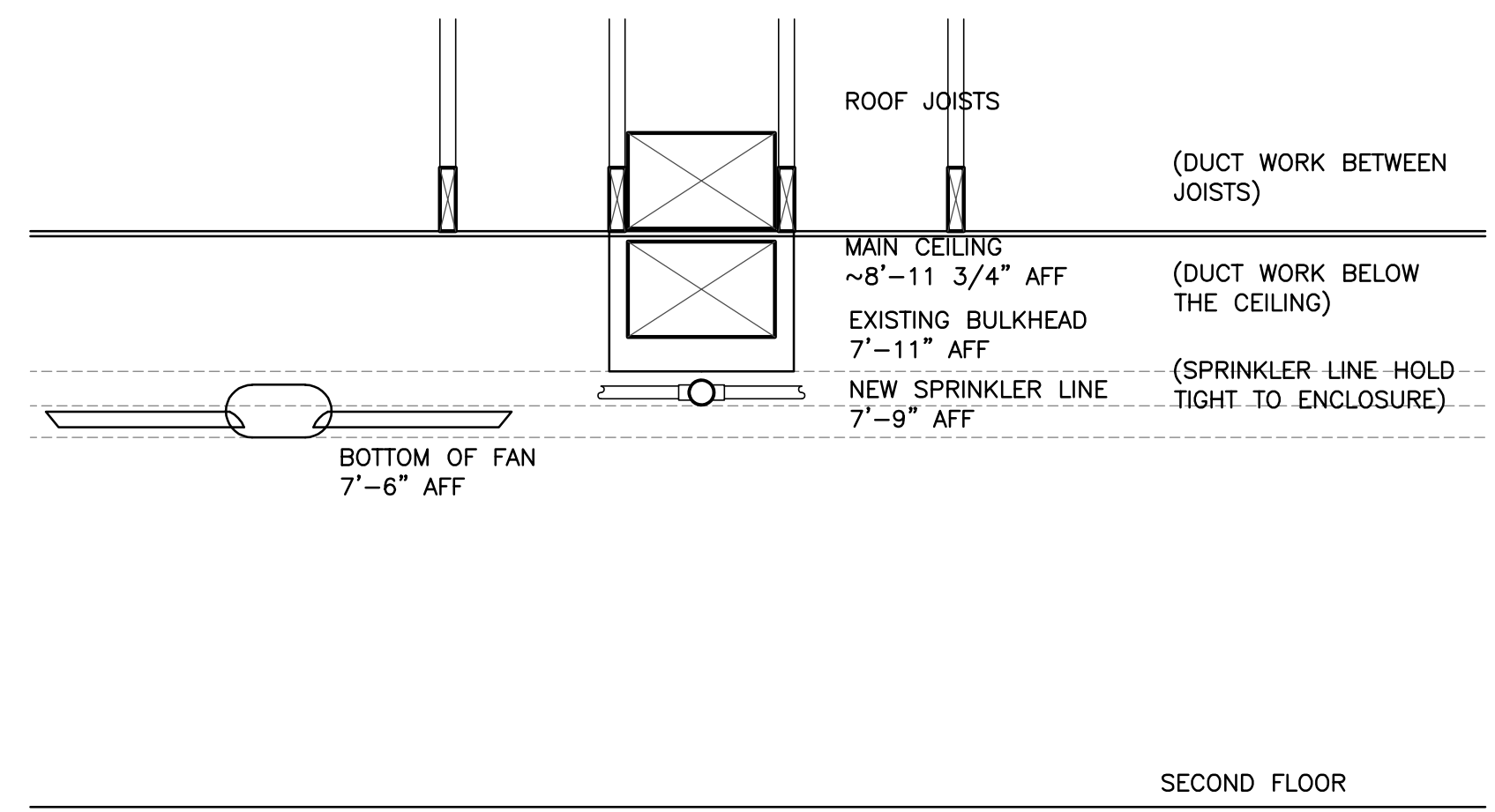
1536 16th Street NW Washington, D.C.  
PETA FOUNDATION  
SECOND FLOOR PLAN & RCP

DNC PROJECT NUMBER  
20013

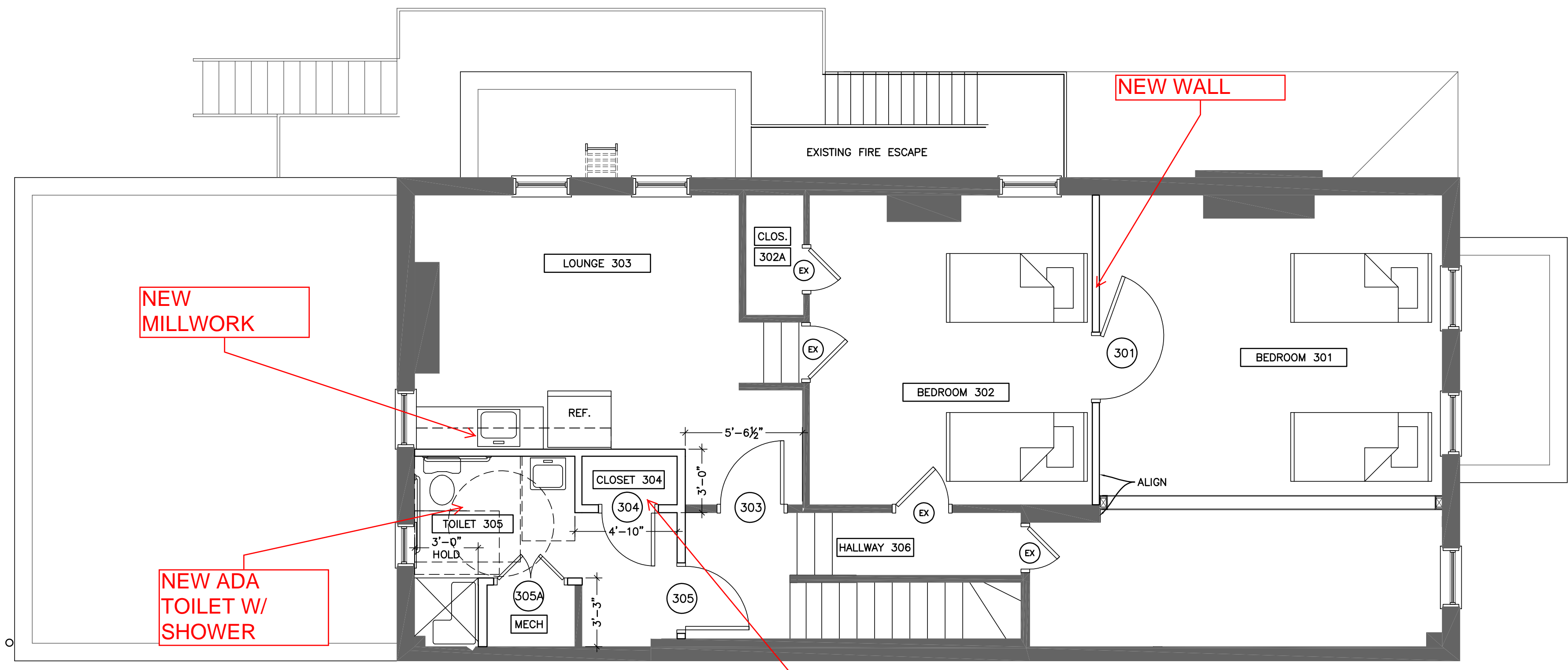
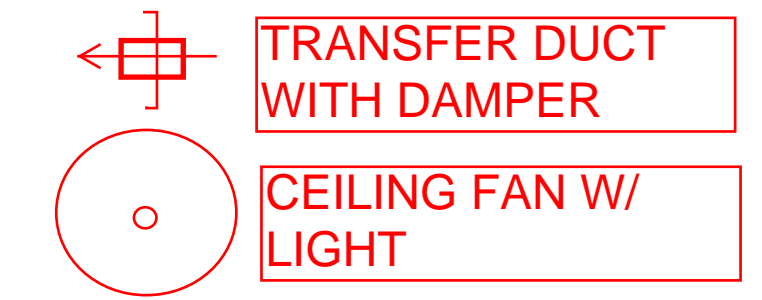
TA103



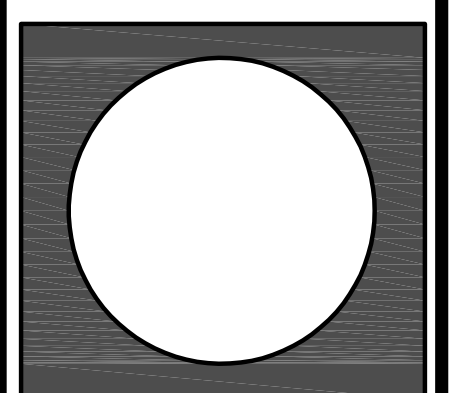
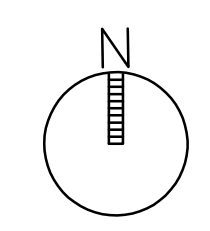
02 THIRD FLOOR RCP  
TA104 SCALE: 1/4"=1'-0"



SECOND FLOOR



01 THIRD FLOOR PLAN  
TA104 SCALE: 1/4"=1'-0"



ISSUED FOR	DATE

NO.	REVISION	DATE